

Origin Series Product Data Sheet

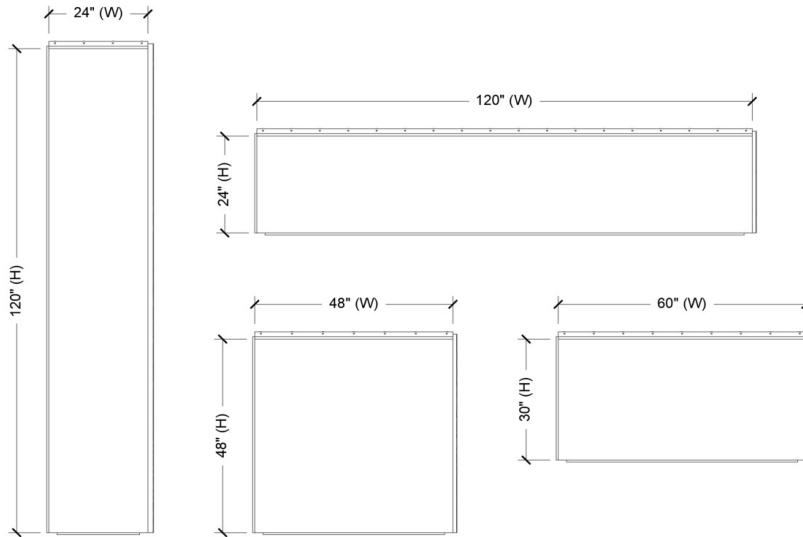
Post Painted Aluminum - Dimension Series (AL-08)



Pressure Equalized Rainscreen System | Designed in America | Made in America | Solid Metal

Maximum Dimension Series Panel Size Parameters

Panel sizes as shown are the recommended maximum width and heights. If there is a panel size that fits inside these guidelines, ZPS can easily manufacture it. Please contact a ZPS to discuss larger panel sizes.



Technical Information

Material Thickness:	.080" Aluminum
System Depth:	1-1/4" nominal standard, up to 6"
Material Weight:	Less than 2 lbs. / sf
Panel Joints:	5/8" nominal (1/8" - 1" available)
Material Finish:	70% PVDF 100% FEVE, AAMA 2065
Warranty:	20 years for paint 2 years for MFG.



Finish Warranty: 20 Years (*exotics & bright colors could be a 5 or 10-year, determined by paint supplier)

Fully Tested System: AAMA 508 | ASTM E330 | ASTM E283 | ASTM E1233 | ASTM E331 | AAMA 501.1



PO Box 1589 Holland, MI 49423

info@zeffpanels.com | www.zeffpanels.com