

Origin Series Product Data Sheet

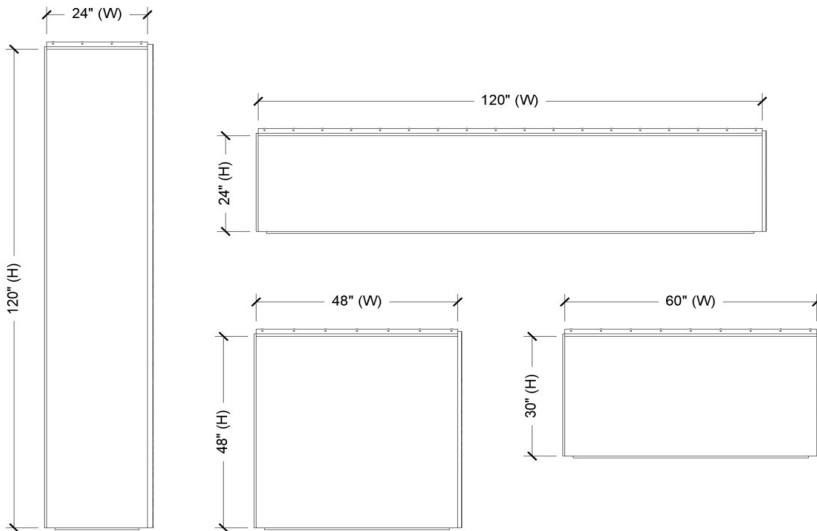
Weathering Steel (WS-16)



Pressure Equalized Rainscreen System | Designed in America | Made in America | Solid Metal

Weathering Steel Maximum Panel Size Parameters

Panel sizes as shown are the recommended maximum width and heights. If there is a panel size that fits inside these guidelines, ZPS can easily manufacture it. Please contact a ZPS to discuss larger panel sizes.



Technical Information

Material Thickness:	16ga, A606-4 Weathering Steel
System Depth:	1-1/4" nominal standard, up to 3"
Material Weight:	≈ 3 lbs. / sf
Panel Joints:	5/8" nominal (1/8" - 1" available)
Material Finish:	Mill Steel - Naturally Weathering
Warranty:	1 year for MFG.



Material / Patina: A606-4 weathering steel is a high strength, cold rolled material. A matte finish occurs on the steel from iron oxide. The natural weathering process (patina) will naturally occur after material installation.

Fully Tested System: AAMA 508 | ASTM E330 | ASTM E283 | ASTM E1233 | ASTM E331 | AAMA 501.1



PO Box 1589 Holland, MI 49423

info@zeeffpanels.com | www.zeeffpanels.com